



VAN BUREN COUNTY ROAD COMMISSION 2023 ANNUAL REPORT

Van Buren County Road Commission

Email: vbcrc@vbcrc.org

Website: www.vbcrc.org

Tel: (269) 674-8011

325 W James Street; PO Box 156

Lawrence, MI 49064

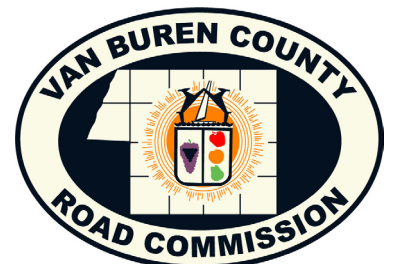


TABLE OF CONTENTS

Overview -----	3
Organizational Structure -----	5
Who We Are -----	6
Glossary of Terms -----	10
Hot Topics -----	13
Revenues -----	18
Expenditures -----	21
Public Works Annual Report -----	27
Township Summaries -----	29
Act 51 and Audit Reports -----	50

OVERVIEW

Strategic Highlights

The Road Commission continuously looks for opportunities for improvement and growth. In 2023 the Board approved updates to the Road Commission's Road Plan (based upon the Transportation Asset Management Plan (TAMP)). Developed with input from Road Commissioners, staff, and Township partners, the updated TAMP develops a reasonable and attainable plan. The updated TAMP plan can be found on the Road Commission's website at vbcrc.org/tamp.

Financial Highlights

The Michigan Transportation Fund (MTF) is the primary source of the Road Commission's funding. While the Michigan State Legislature implemented a much-needed increase in the funding stream for the MTF beginning in 2017, the increase still falls short of the necessary funding to adequately maintain our 1,313 miles of roadway and over 74 bridges. Additionally, the COVID-19 pandemic resulted in the Van Buren County Road Commission losing anticipated revenues. As a result, the Road Commission submitted a request to the County Board of Commissioners to utilize county allocated American Rescue Plan Act (ARPA) funds to complete a much-needed road project. In the spring of 2023, the County approved the VBCRC's use of ARPA funds for the 2024/2025 construction season. Despite these funding shortfalls, the Road Commission utilized available funding to make a positive impact on the transportation system within Van Buren County in 2023.

Operating Highlights

Operations Director Brucks and Highway Engineer Anttila are working together to modify the Road Commission's approach to maintenance and construction activities so these departments can become more proactive and less reactive. While funding levels constrain all aspects of this endeavor, staff is working to be proactive when possible. Building a highly efficient and knowledgeable employee base will assist in this endeavor. Throughout 2023, the Road Commission developed new training protocols for new and existing Road Maintenance Employees (RME) and Mechanics and generally worked to improve employee relations.

Looking Ahead

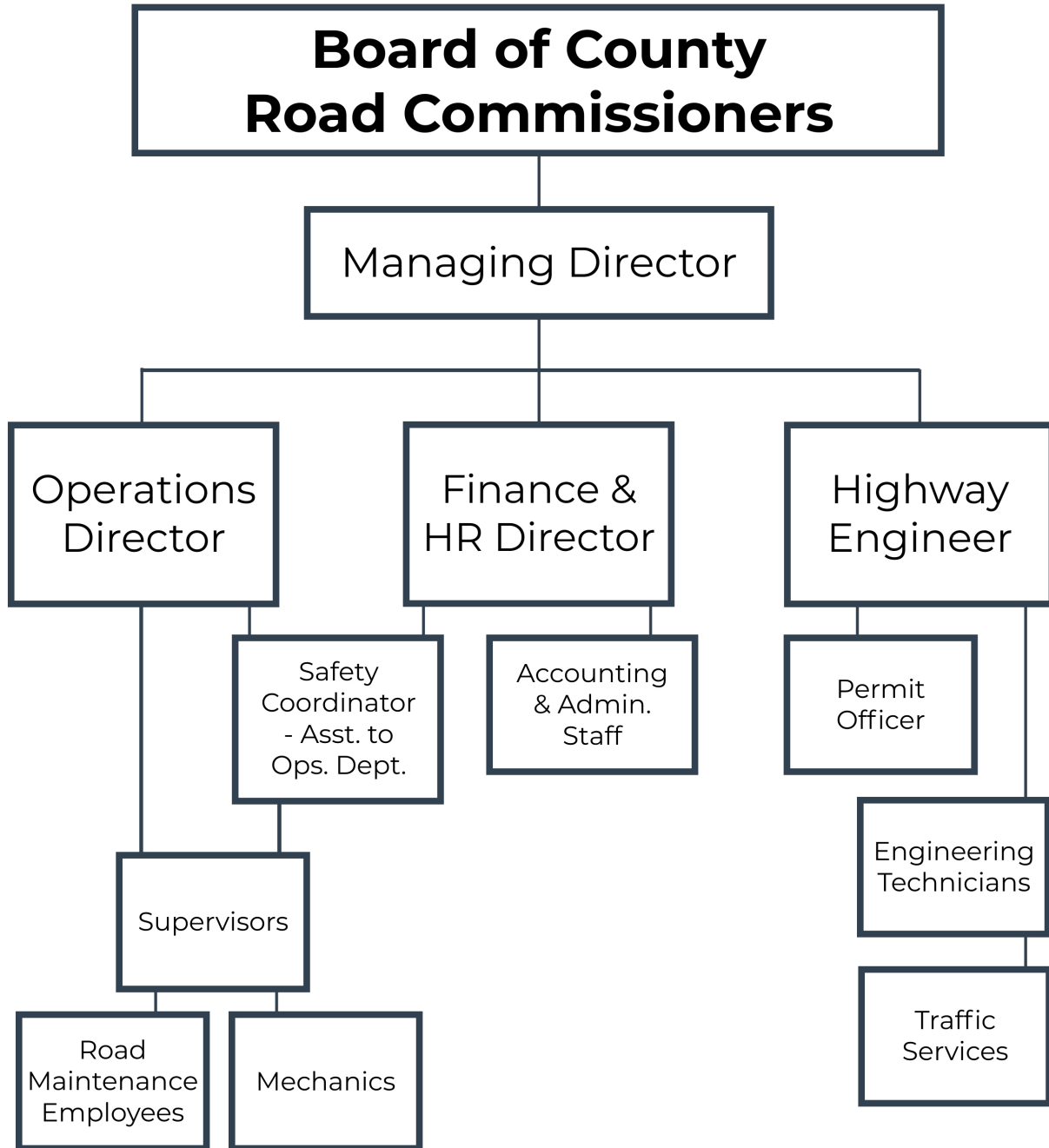
Over the next several years, the Road Commission and its partners will need to continue working together to decide the future of the road system within Van Buren County. The needs of the road system far outweigh the funding received for roads within our County. As partners we need to determine the correct course of action into the future.

Bret Witkowski

Managing Director

August 27, 2024

VAN BUREN COUNTY ROAD COMMISSION ORGANIZATIONAL STRUCTURE



WHO WE ARE

Commissioners



W.C. Askew, Sr. was appointed to the Board of County Road Commissioners of Van Buren County in 2013 and has served as Chairman of the Board in 2016-17, and as Vice-Chairman of the Board in 2015, 2021, 2022, and 2023. Previously he served as a Commissioner for Berrien County for 15 years, the Clerk of Benton Charter Township for four years, and as a Board Member for Tri-County Head Start for 25 years. He is currently serving as an Election Inspector for South Haven Charter Township, a Financial Advisor for Shoreline Financial Service, President of Faith Non-Profit Housing Corporation, President of Faith Community Development Corporation, and as a member of the South Haven Rotary Club. He is a graduate of Lake Michigan College in Benton Harbor, Michigan, and International Seminary in Plymouth, Florida, holds two degrees from Oval Bible College in Lawrenceville, Georgia, and currently serves as Pastor of Faith Evangelistic World Outreach Ministries.



Reginald D. Boze was appointed to the Board of County Road Commissioners of Van Buren County in 2011 and has served as Chairman of the Board in 2015, 2019, and as Vice Chairman of the Board in 2013-14. He is currently the Auto Maintenance and Light Repair (MLR) Automotive Programs at Van Buren Tech Center (VBISD) and served for 12 years as a Union Steward, four years as President and four years as Vice President. He also was the owner of a Snap On tool franchise. As a Reserve Sheriff Deputy for over 40 years, he has had an opportunity to travel most all roads in Van Buren County. In addition, he has taken care of five rental houses maintaining water, sewers and driveways. Commissioner Boze is a 40-year ASE Certified Master Mechanic & has an Associate's Degree in Automotive Technology from Southwestern Michigan College, and is a lifelong resident of Van Buren County.

WHO WE ARE CONTINUED



Doug Burleson was appointed to the Board of County Road Commissioners of Van Buren County in 2018, served as Chairman in 2021, and as its Vice-Chairman in 2020. Commissioner Burleson retired in 2019 as Public Works Superintendent for the Village of Bloomingdale after 27 years of service. He is currently self-employed as a grain and livestock farmer.



Gregory H. Kinney was appointed to the Board of County Road Commissioners of Van Buren County in 2009 and served as Chairman in 2013-14 and 2020. He also served as Vice-Chairman of the Board in 2011-12 and 2018-19. Previously he served as a pension consultant at the Detroit office of The Wyatt Company on U.S. & Canadian retirement plans. Subsequently, he was a private practice attorney in Detroit, Troy and Decatur, Michigan. He has a Master's Degree in Labor & Industrial Relations, and a Law Degree. He is an active member in good standing with the Michigan Bar Association. He received an honorable discharge from the U.S. Army-Michigan National Guard as a Second Lieutenant.



Wayne Nelson was appointed to the Board of County Road Commissioners in 2022 and served as Chairman in 2023. He grew up and attended schools in Hartford, Michigan. After college at the University of Michigan, he became Controller of Van Buren State Bank (by mergers now PNC Bank) and also served as Mayor of the City of Hartford. He then served as Van Buren County Treasurer from 1984-1996. Wayne and his wife moved to Almena Township where he served 8 years as Township Treasurer, also working 10 years for the City of Kalamazoo as its Deputy Treasurer/Deputy Assessor. He is also an accomplished keyboard musician and a certified property tax assessing officer.

WHO WE ARE CONTINUED

Directors



Managing Director, Bret Witkowski guides and directs the organization toward its primary objectives based on board policy and annual revenue. In addition, he researches and makes recommendations for changes to road commission policies, and represents the road commission to local, state, and federal officials.



Highway Engineer, Barry Anttila oversees all primary and local construction projects and engineering activities including planning, design, surveying, construction, and monitoring of utility activities as well as the permit department and traffic services department. Barry also reviews and makes recommendations for the maintenance/repair of bridges and bridge structures. Barry's responsibilities also include overseeing the county-wide paint and guardrail programs. In addition, Barry reviews surveys, aerial photographs, and other information for long-term planning.



Operations Director, Greg Brucks coordinates and plans work schedules for Road Maintenance and Mechanics County wide to accomplish daily tasks relating to the maintenance of primary and local roads and rights of way within the jurisdiction of the Road Commission as well as the Road Commission's fleet. In addition, Greg works with the public, township officials, and Road Commission staff to address various needs and concerns as they arise as well as long term planning.



Finance and Human Resources Director, Linnea Rader works with the Board of County Road Commissioners and other Directors to develop the budget and monitor revenues and expenditures throughout the year, compiling the data into the annual report and following Act 51. Linnea also manages the human resource functions within the Road Commission. Additionally, Linnea facilitates the development and updates for the Road Commission's Strategic Plan and the Road Commission's Transportation Asset Management Plan and other long-term planning processes.

VAN BUREN COUNTY ROAD COMMISSION



Residents In Our Service Area:

66,350

59

Employees

1,855 Culverts

18

Townships In Our Service Area

75 Bridges

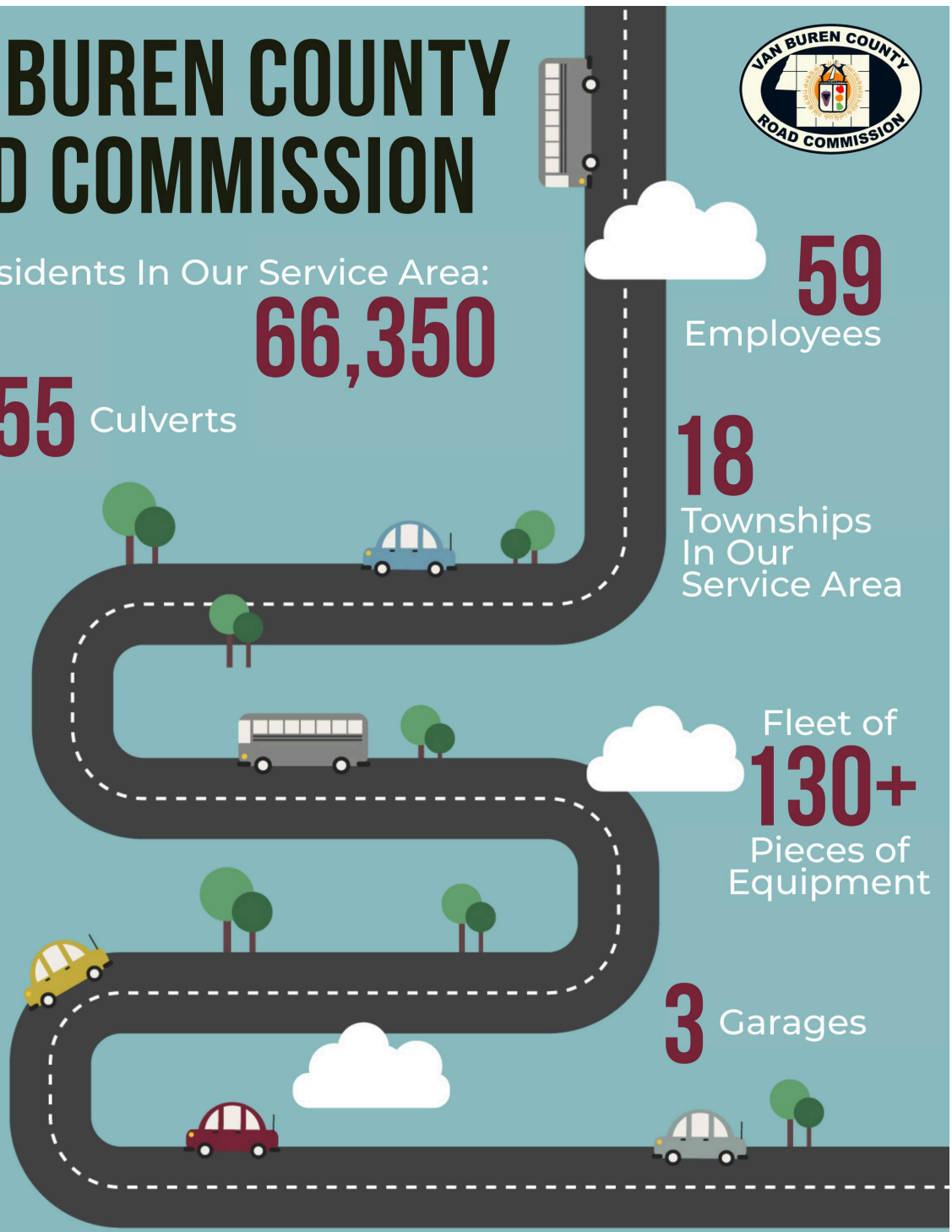
Fleet of **130+**

Pieces of Equipment

3 Garages

Over **1,313** Road Miles

6,974 Traffic Signal & Signs



GLOSSARY OF TERMS

Act 51 - Public Act 51 of 1951, as amended (Act 51), governs the distribution of specific taxes for transportation purposes. Act 51 creates a fund into which specific transportation taxes are deposited, and prescribes how these revenues are to be distributed and the purposes for which they can be spent.

Act 51 Certified Roads - Act 51 establishes jurisdictional road networks within the State of Michigan. Road agencies can only expend Act 51 revenues on those roads certified by Act 51.

Asset Management - The systematic process of identifying, classifying, evaluating and maintaining assets in a cost-effective manner.

Bituminous Overlay - Application of a HMA placed on top of gravel or other old surfaces and rolled to compact in place.

Connectivity/Arterial - Designated routes and road segments that connect population centers and intercounty highways.

Culvert - Usually a factory assembled round or arch shaped pipe connected together with couplers or bands; a culvert differs from a bridge in that it is usually constructed entirely below the road surface.

Fog Seal - A layer of liquid asphalt applied over the top of a recently sealcoated surface. The layer of liquid seals the roadway, locking down marginally embedded chips and reducing infiltration of water.

Grading - Cutting through, re-distribution and re-compacting of a gravel road surface, and/or adding new road gravel material to obtain the desired roadway shape and profile. This term is often incorrectly used when referring to blading.

Heavy Maintenance (Preservation/Structural Improvement) - Road work including placing a hard surface on a gravel road, reconstruction of existing road or bridge, resurfacing a road with a HMA overlay or installation of new culverts or catch basins.

Hot Mix Asphalt (HMA) - A hot mixture of asphalt, a glue like material, and various sizes of stone (asphalt), which is rolled to compact.

GLOSSARY OF TERMS CONTINUED

Hot Rubber Crack Sealing - Rubber material consisting of polymers, virgin rubber and bituminous emulsion to form an elastic moisture barrier over cracks in the road that will maintain its form, when properly heated and applied, over extreme heat and cold fluctuations in the roadway.

Local Roads - Streets, avenues, and roadways within subdivisions.

Michigan Transportation Fund (MTF) - The fund created by Public Act 51 to provide road funding to local jurisdictions. Act 51 defines the formula by which Michigan distributes money in the MTF for road maintenance to cities, villages, and counties.

Pavement Surface Evaluation and Rating (PASER) - A 1-10 rating system for road pavement condition utilizing visual inspection to evaluate pavement surface conditions. PASER ratings provide a basis for comparing the quality of roadway segments and assist in prescribing appropriate road treatment options.

Preventative (Special) Maintenance - Road work including sealcoat, hot rubber crack sealing, wedging, etc., to preserve roads by retarding surface deterioration.

Primary Roads - Red Arrow Highway, Blue Star Highway, and all roads with the "County Road (C.R.)" designation.

Reconstruction - Removal of the existing roadway materials to be replaced with materials and thickness conforming to current standards for pavement design. Vertical and horizontal alignment drainage improvements are also types of reconstruction.

Rehabilitation - Placing additional surface material or doing other work to return a road, including shoulders, to a structural or functional adequacy.

Resurfacing - Placement of a designed thickness of pavement materials over the existing pavement. The material is added to match the elevation of the new pavement.

Routine Maintenance - Work including pothole filling, gravel patching, pavement marking, roadside mowing, traffic road sign installation, snow removal, etc.

Sealcoat - Liquid asphalt emulsion that is applied in a single application to an existing HMA surface, which then is covered with a single layer of stone or slag and imbedded by a mechanical means of rolling.

GLOSSARY OF TERMS CONTINUED

Strategic Planning - A process in which an organization defines the vision for the future and identifies the organization's goals and objectives.

Transportation Asset Management Council (TAMC) - Formed under Public Act 499 of 2002, TAMC acts as a resource for independent objective data on the condition of Michigan's roads and bridges and a resource for implementing the concepts of asset management.

Transportation Asset Management Plan (TAMP) - A tactical document created as a summary of information about assets, management strategies, and long-term expenditures. The TAMP acts as a management tool to bring together all business processes to achieve common understanding and commitment to maintain performance standards.

HOT TOPICS

Accomplishments

Successful
2023

2024-2028
Road Plan

Facility
Investment
Plan

Community
Engagement

Employee
Training

2023 was a year of great accomplishment and success for the Road Commission.

Throughout the year the following was accomplished:

- \$9.6 million expended in heavy maintenance improvements
- Approx. \$11.1 million expended in routine and special maintenance
- Almost \$1.3 million expended for winter maintenance
- Development of the 2024-2028 Road Improvement Plan
- Planning an aggressive and impressive road maintenance and improvement plan for 2024
- Evaluating and modifying plans for maintaining and improving Road Commission facilities including the postponement of previously planned projects
- Continued equipment replacements
- Continued the development of an employee training program and sustaining employee engagement

The update of the Transportation Asset Management Plan (TAMP) was key in providing direction for investment of the Road Commission's management responsibilities for the 2024-2028 Road Plan. The Plan outlines the 5-year plan for road improvements and the criteria utilized to select projects. This Plan is explained in further detail within this Annual Report.

HOT TOPICS CONTINUED

Accomplishments

During 2023, the Road Commission re-evaluated the need for a new Bangor facility and remodeled administrative facility. Bids received for both projects were double the original estimates, and, as a result, the projects were postponed. The Board, however, committed to support facility improvements by budgeting at least \$400,000 per year for facility improvements to ensure all Road Commission facilities are maintained effectively.

To prepare for success in 2024, the Road Commission utilized the criteria outlined in the TAMP, information from the 2024-2028 Road Plan, and defined needs of the organization to prepare a dependable and effective 2024 Plan. This Plan includes:

- \$6.8 million in Heavy Maintenance Improvements including work on:
 - CR 215 from 44th Avenue to 48th Avenue in Arlington Township, completing safety improvements utilizing federal funds for approximately 60% of the project costs.
 - CR 388 from CR 653 S. to the Kalamazoo County Line in Pine Grove Township continuing the agency's focus on improving CR 388 from the lakeshore to the east County line.
 - CR 380 from Blue Star Highway to 76th Street in South Haven Township, continuing to make improvements along CR 380 throughout the County.
 - CR 384 from the South Haven Township line to CR 687 in Geneva Township, partnering with Geneva Township to contribute almost 40% of project costs.
 - Over \$2 million in projects on the local road system
- \$11.2 million in Routine and Special Maintenance including 50 miles of primary sealcoat and fog seal
- \$2.7 million in necessary equipment and building improvements

HOT TOPICS CONTINUED

Accomplishments

In 2023, the Road Commission frequently updated our website and social media. We also continued developing and distributing weekly updates to share upcoming plans with our residents. SeeClickFix continues to be used to address requests from the community. In 2023 our social media platforms were able reach 1,025 new members on Facebook, Instagram, LinkedIn, and X (F.K.A. Twitter). Community engagement initiatives such as these have improved relationships with our community partners and made a positive impact on the public we serve.

Throughout 2023, the Road Commission continued expanding training programs for employees. Investing in our employees has created a positive work culture, which will provide a greater level of efficiency and effectiveness of operations in the future. Details about these endeavors are as follows:

Training -

The Road Commission has continued its focus on employee training throughout 2023. We continue working with staff members to improve training for new employees including manuals for various tasks with equipment, videos, and more. The training topics range from tangible tasks such as basic truck operations, to bigger picture ideas such as effective communication. Collaboration between administrative and non-administrative staff on these training topics has proven to be invaluable as the information and ideas shared have been pertinent, accurate, and beneficial to the training program. Senior staff members have also received “refresher training” in various areas to maintain consistency in tasks and operations.

HOT TOPICS CONTINUED

How are roads selected for improvement?

In 2021, the Board of County Road Commissioners of Van Buren County adopted a Transportation Asset Management Program (TAMP). In 2023, the Board of County Road Commissioners approved the 2024-2028 Road Plan. This Road Plan was developed in accordance with the criteria outlined in the TAMP as further explained below. The TAMP outlines the Road Commission's assets and financial resources, and defines the needs for improvements to the road system and the criteria used to make project selections as follows:



The Transportation Asset Management Council (TAMC) has adopted the Pavement Surface Evaluation and Rating (PASER) scale to provide asphalt surface condition data and the Inventory Based Rating (IBR) scale to provide gravel road condition data. The Van Buren County Road Commission, in partnership with the 18 Townships within Van Buren County, has prioritized the data collection of all asphalt roads every year and all gravel roads every three years. This collected data allows improvements to be prioritized based upon what can be accomplished in an effective manner to improve and maintain our road system.

Traffic count data on the paved road system in Van Buren County has been collected and is updated as needed. By prioritizing road improvements based upon traffic counts, the Road Commission provides improvements on roads most utilized.

The Road Commission leverages funding from the federal and state government for projects on the eligible routes (244 miles) within Van Buren County. Projects utilizing federal and state aid are performed with a cost share of anywhere from 50-90% federal or state aid, with the remaining coming from local (Road Commission and/or Township) funds. Without the allocation of these dollars, these projects would likely not take place.

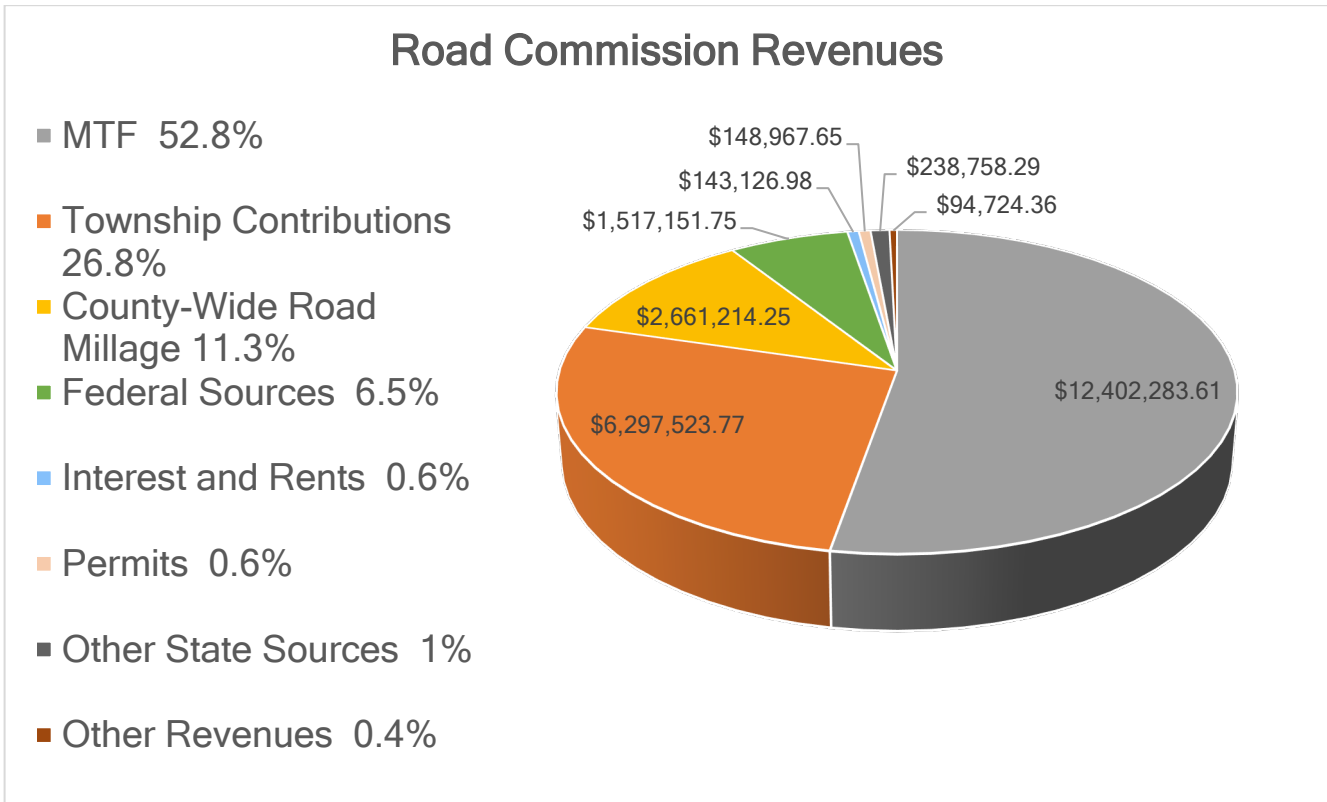
HOT TOPICS CONTINUED

Over the years, the Road Commission and Townships have built a partnership in which the Road Commission prioritizes projects on roads with higher traffic volumes (primary road system) and the Townships prioritize projects on roads with lower traffic volumes (local road system). Each Township develops a plan based upon available funding, the needs of the roads, and requests received from the residents within their township. This partnership adds, on average, \$3 million annually from Township funds for road improvements selected by the Townships.

Connectivity throughout the County is another important factor in selecting road improvements. Improving road segments that connect population centers and other transportation networks best serves the traveling public. By focusing dollars in this manner, it ensures road project segments link to other improved road segments thereby creating an improved road **network** as opposed to single improved road segment connected to an unimproved road segment.

To summarize, road improvement projects planned in the 2024-2028 TAMP are selected based upon the availability of additional funding sources, traffic volume, asset management principals (including the PASER road rating and connectivity). Road improvement projects selected by the Townships are selected by the respective Township Board based upon criteria determined at the Township level.

REVENUES



Van Buren County Road Commission's main source of funding is the Michigan Transportation Fund (MTF). The MTF is collected through fuel taxes and vehicle registration fees. In 2015 the Michigan State Legislature passed a funding package to increase MTF incrementally from 2017 through 2022. Beginning in 2019, the State Legislature must annually allocate general fund dollars to fulfill half of the funding package.

The needs of road systems across the State of Michigan as well as the Country have been historically underfunded. In addition to this long-standing problem, through the period of 2004 to 2017 the Road Commission experienced decreases in funding through our primary funding source the, MTF. As road repair costs elevate, funding does not keep up, resulting in the continued deterioration of road system conditions.

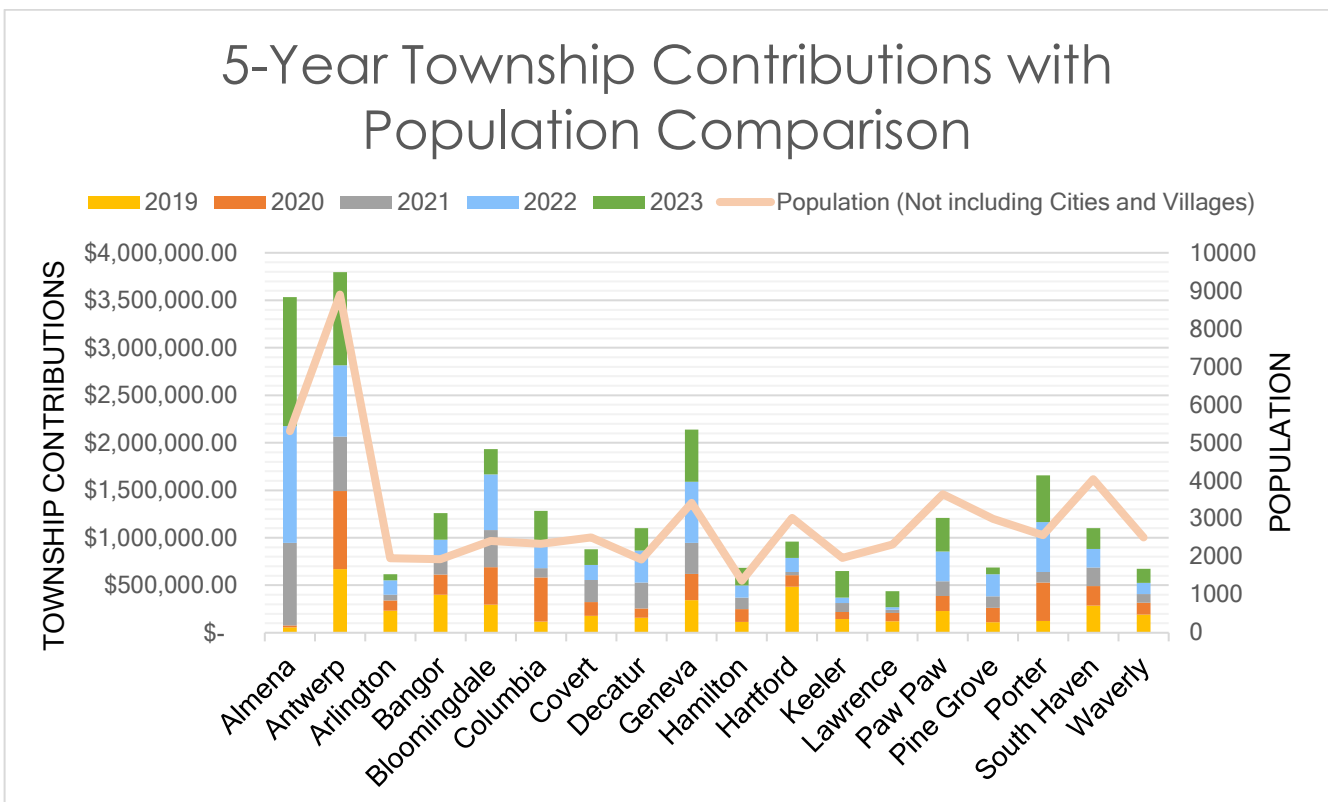
The Road Commission's budget includes funds for repairs and routine maintenance on the certified road system in Van Buren County. The current road funding structure from the State requires prioritization by the Board of County Road Commissioners for necessary road

REVENUES CONTINUED

repairs and maintenance. Due to this limited funding, requested road work that is not included in the Road Commission’s budget is often funded by the Townships.

The Road Commission and the Township Partners have worked together for decades to provide additional road projects with funding from the Township level. These projects have primarily been on the local road system but are increasingly necessary on the primary road system as the Townships recognize a need. This partnership between the Road Commission and the Townships is built out of necessity to best serve the public of Van Buren County and is necessary for the improvement of infrastructure within the County.

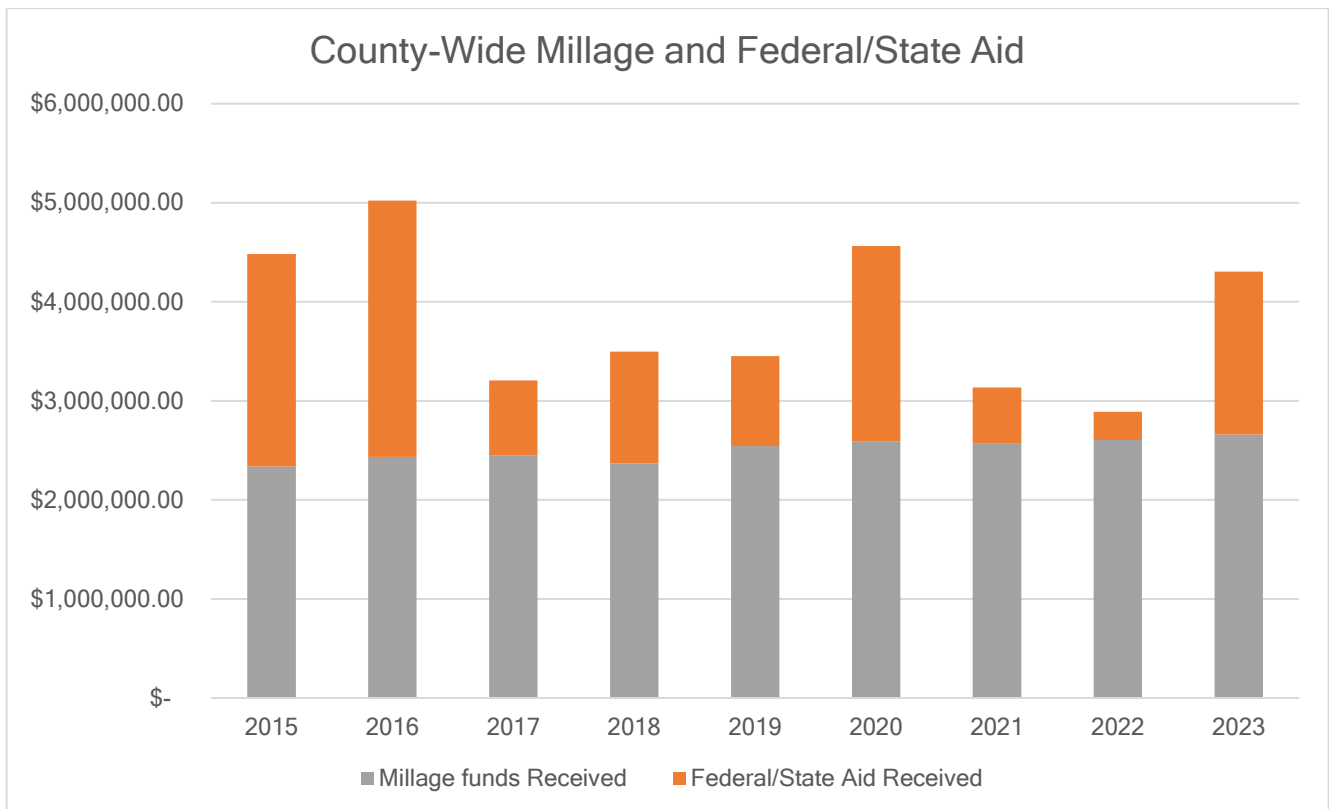
Understanding that general road and bridge funding leaves a gap in the ability to make necessary improvements, 17 of the 18 Townships have passed a Township Road millage to provide additional road and bridge funding. These funds assist in filling part of the gap of infrastructure needs versus funding. In 2023, the funds from all of the 18 Townships provided over \$6 million in road work throughout the County. The following chart shows Township contributions over the last 5 years compared to the population of the unincorporated portions of each Township (NOT including the population within Cities and Villages).



REVENUES CONTINUED

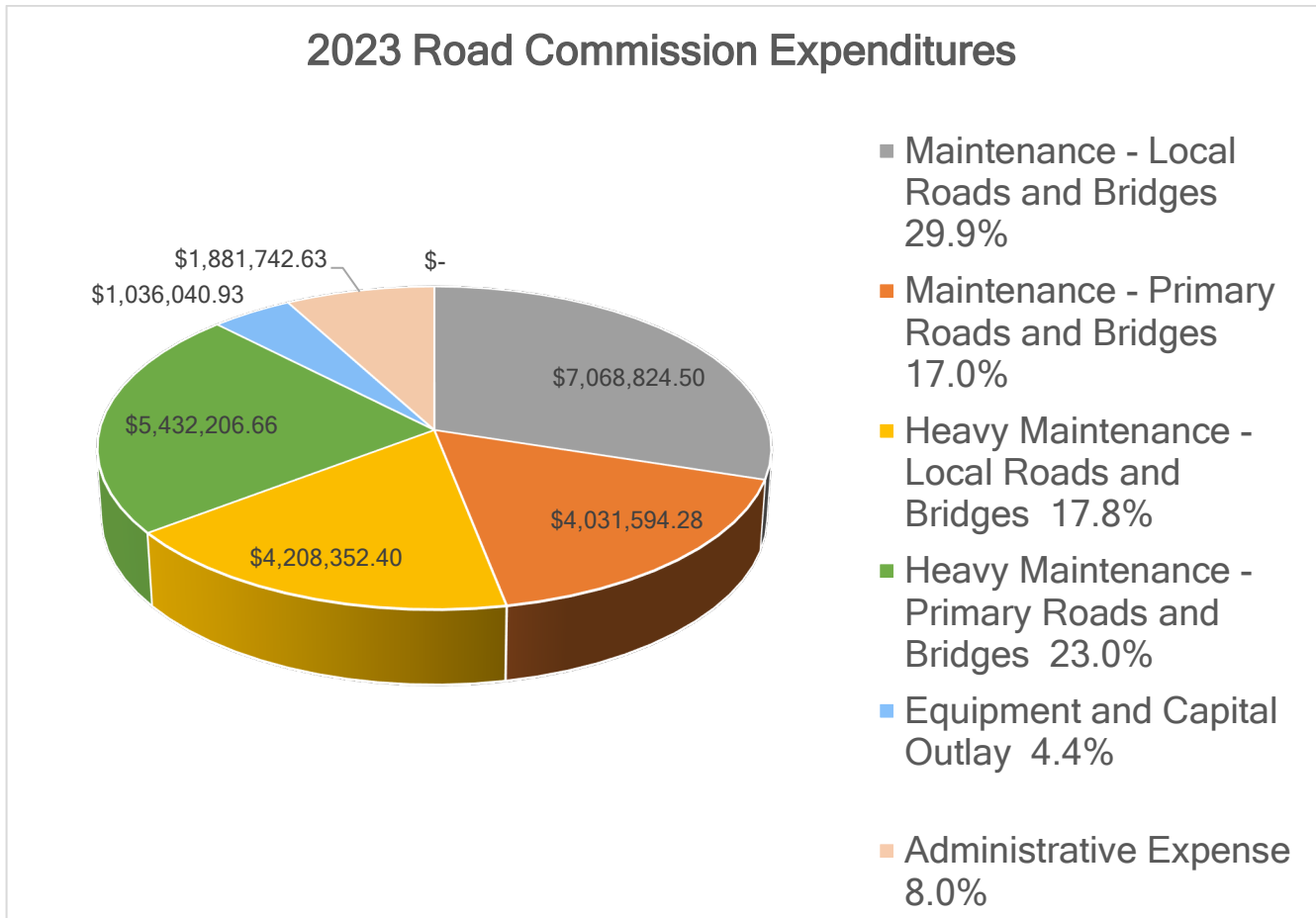
In 1978, the citizens of Van Buren County passed a ballot proposal for a County-wide Road Millage. The Van Buren County Road Commission receives a distribution from the millage funds, together with all cities and villages in Van Buren County. These millage funds are not spent on routine maintenance activities, but on road improvements.

Millage funds received by the Road Commission are first utilized to leverage Federal and State funds to do larger, more expensive road and bridge projects. Projects that qualify for Federal and/or State Aid are typically paid at a rate of 80% Federal/State funds, and 20% Local Funds (or 90% / 10% for safety projects). By taking advantage of this funding, when available, the Road Commission is able to accomplish many projects it would likely never accomplish without county-wide millage funds. Millage funds are also used to accomplish many other annual improvements and upgrades to the county-wide road system through a selection process that takes into consideration PASER rating, connectivity, asset management, budget constraints, traffic volumes and township priorities.



EXPENDITURES

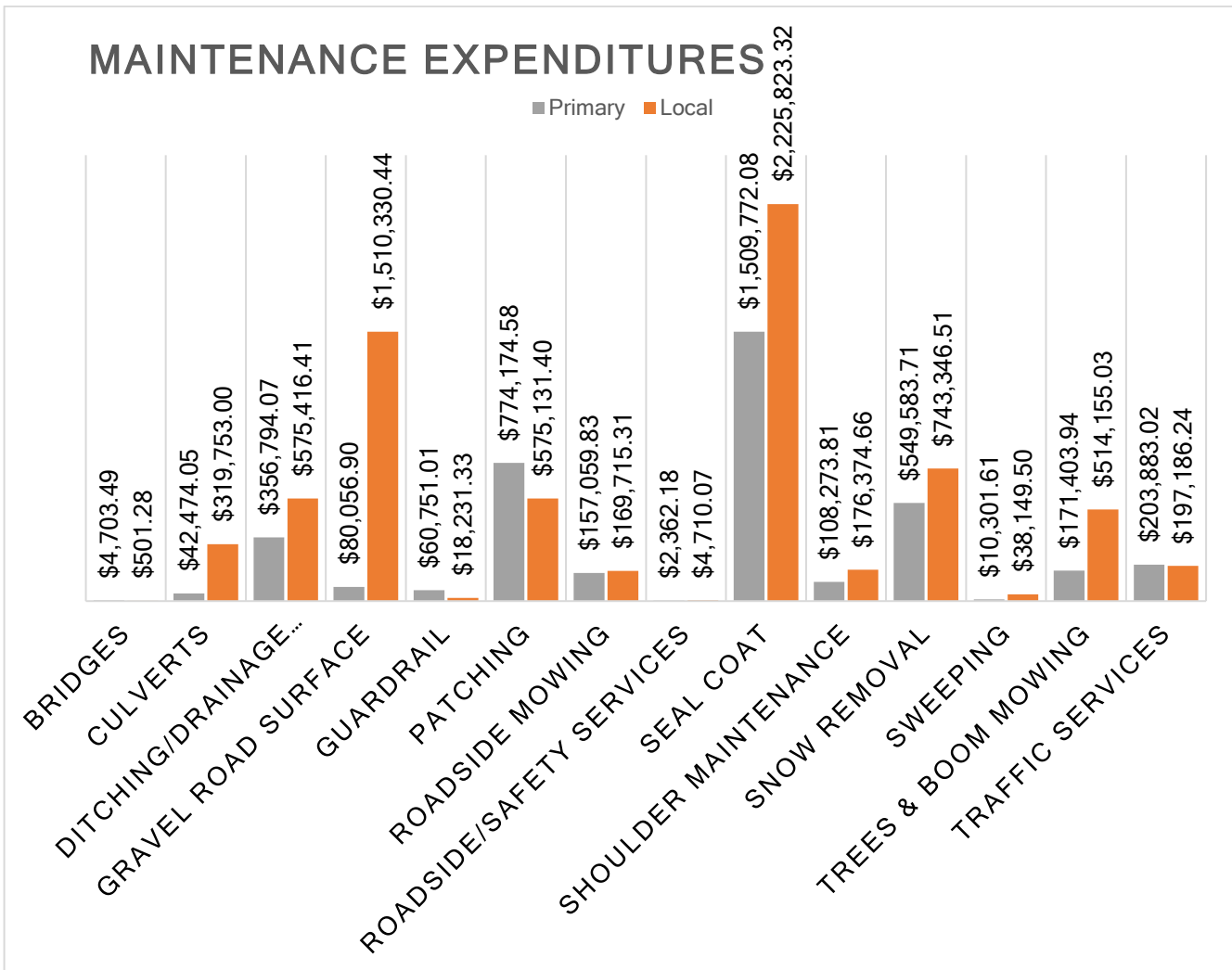
The Board of County Road Commissioners, as well as the employees of the Road Commission, are dedicated to maintaining and repairing the roads within Van Buren County. The following chart shows how the dollars received by the Road Commission are used.



As previously explained, the needs of the road and bridge system within Van Buren County far exceed the funding received. The Board of County Road Commissioners and Road Commission employees must prioritize activities to best maintain and repair the road and bridge network. Often these maintenance or repair activities are not complete solutions, as the solution would be unattainable without increased funding.

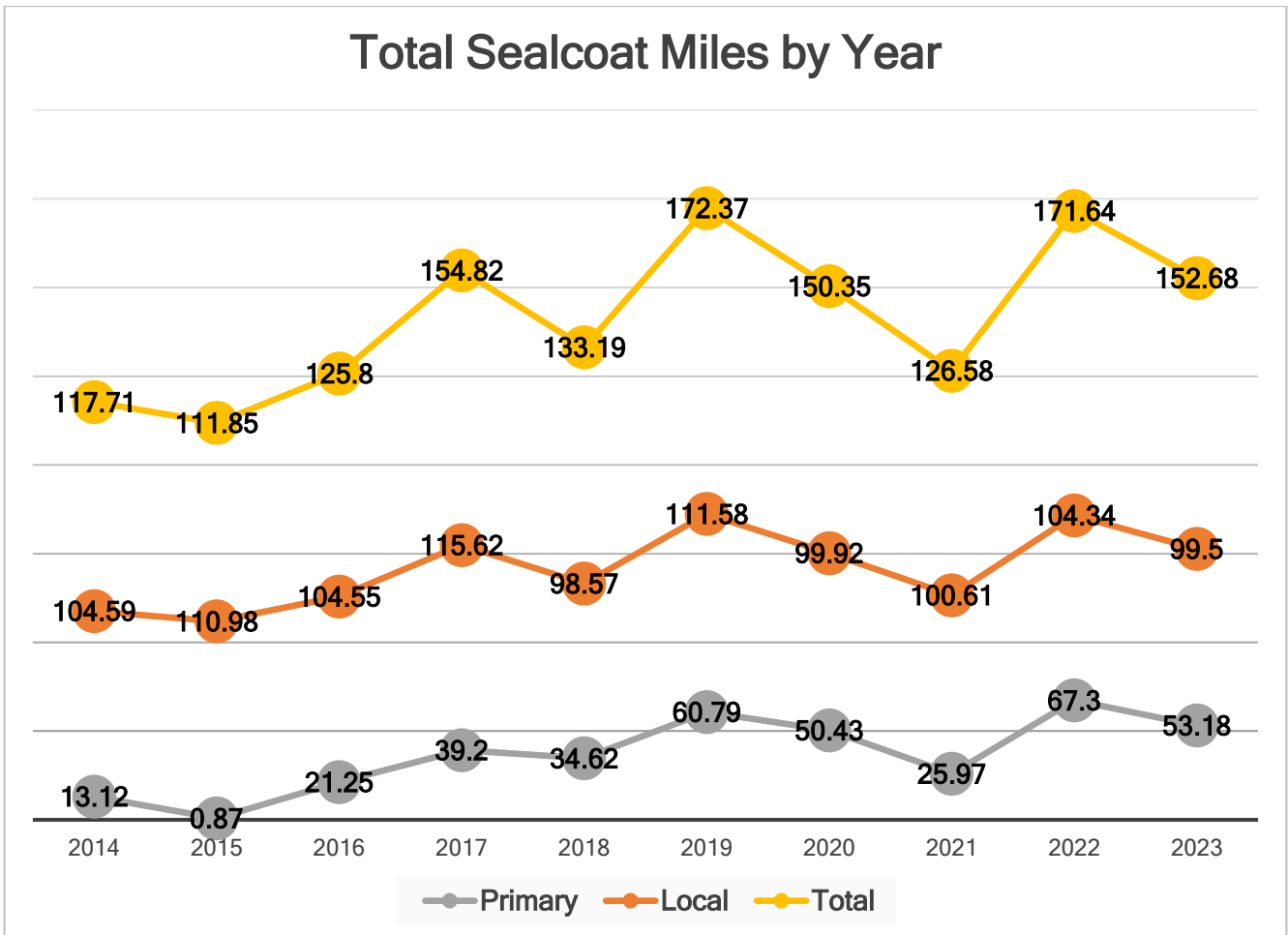
EXPENDITURES CONTINUED

Maintenance activities account for the largest expenditure for the Van Buren County Road Commission. Routine maintenance operations are performed by the Road Commission on all Act 51 certified roads within our jurisdiction, including primary and local roads, as well as roadways within certified subdivisions. The Van Buren County Road Commission and its Township Partners are in close contact throughout the year to improve the quality and safety of our roads, determine maintenance priorities, and discuss various road related issues. This partnership helps to make decisions that represent the interest of the entire county and ensures that the needs of one community are not placed above another. The following shows the maintenance expenditures by type and by primary or local road designation.



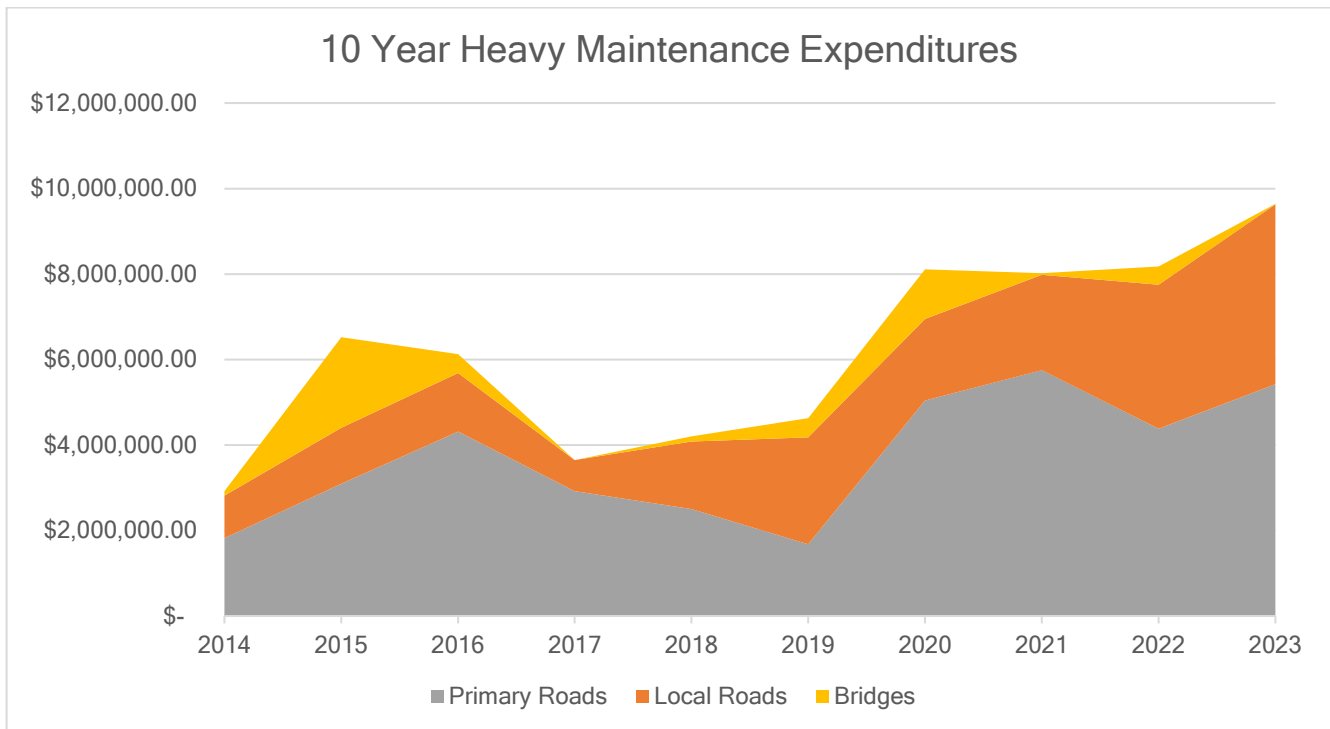
EXPENDITURES CONTINUED

Preventative Maintenance consists of planned activities to extend pavement life for roads in “good” and “fair” condition, as well as to keep roads in “poor” condition from becoming worse, until a longer-term solution can be funded. Sealcoat is a Preventative Maintenance application which protects the road surface from deterioration and prolongs the surface life of the asphalt. This treatment is the most cost-effective Preventative Maintenance application that we utilize to preserve our road system. Sealcoat is performed by spraying a thin layer of liquid asphalt and covering it with a single layer of crushed slag (stone). This Preventative Maintenance application typically protects roads 4-6 years when applied to a road in “good” and “fair” condition, and 1-4 years when applied to a road in “poor” condition. The Road Commission and the 18 townships regularly utilize sealcoat to preserve our road system.



EXPENDITURES CONTINUED

Heavy Maintenance improvements accounted for 40.7% of annual expenditures in 2023, totaling \$9.6 million. The investment in road and bridge improvements plays an important role in the overall condition of the road and bridge network in Van Buren County. These Heavy Maintenance projects are longer term improvements as compared to preventative maintenance. These projects include asphalt overlays (paving), crush (grind existing pavement and re-grade and compact) and shape followed by paving, drainage repairs, mill and repave (grinding off the top layer of asphalt), reconstruction, large culvert replacements, bridge rehabilitation, bridge structure replacement, or a combination of these treatments.



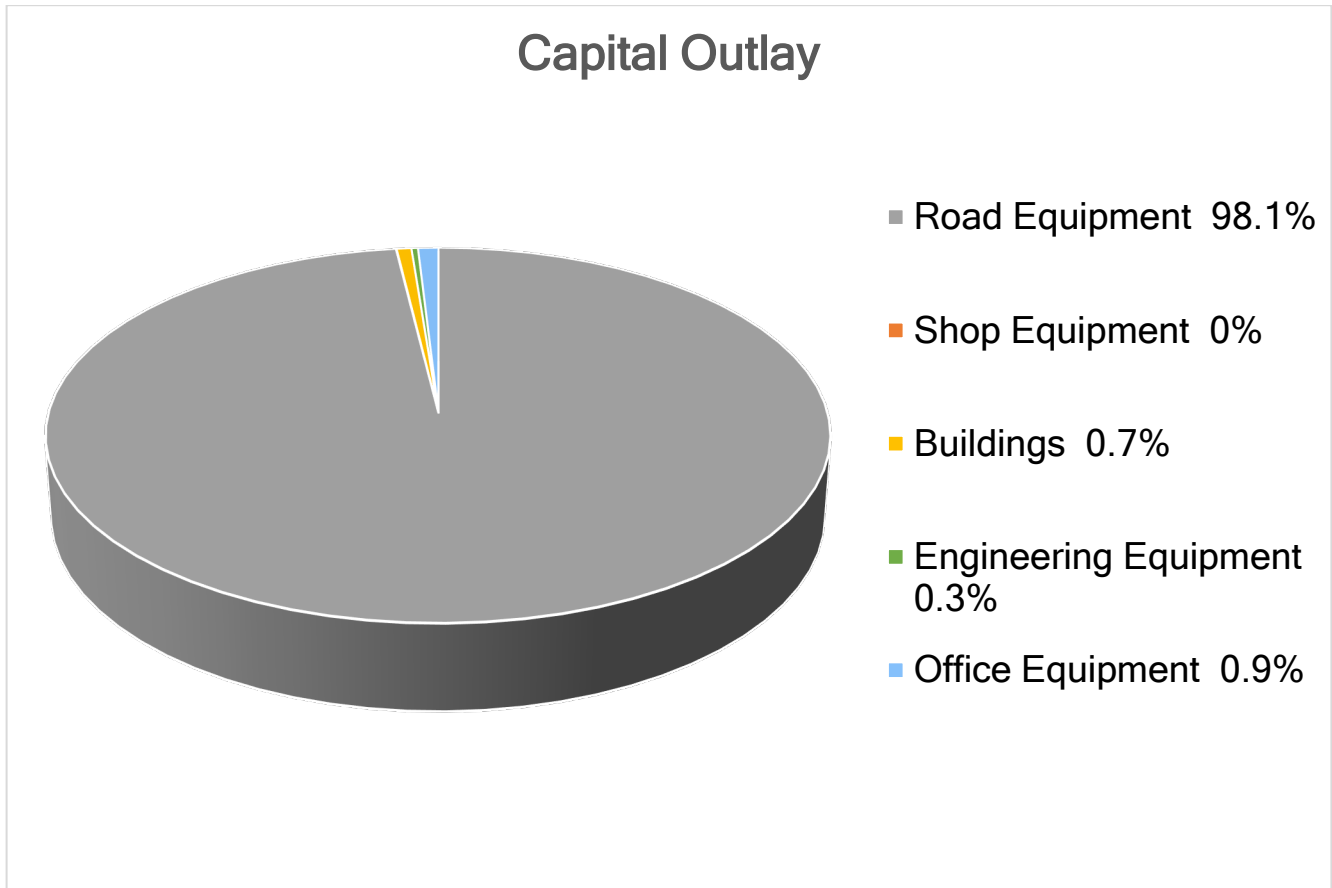
EXPENDITURES CONTINUED

The following information shows the cost of several types of road preventative maintenance or heavy maintenance improvement options utilized by the Van Buren County Road Commission.

Type of Treatment	Estimated Cost per Mile (As of the 2024 construction season)
Crack Seal	\$5,000
Seal Coat and Fog Seal	\$39,000
Gravel Resurfacing	\$35,000
Ultrathin Overlay	\$120,000
Structural Overlay	\$180,000
Mill and Overlay	\$200,000
Crush, Shape, Repave	\$550,000
Reconstruction	\$1,000,000
Bridge Preventative Maintenance	\$150,000
Bridge Rehabilitation	\$150,000-\$300,000
Bridge Structure Replacement	\$1,000,000-\$2,000,000+

The costs of preventative and heavy maintenance projects vary greatly depending on the needs of the road work being proposed. If preventative maintenance can be utilized effectively, the cost-benefit ratio is the highest of any choice. Roads deteriorated past the point of preventative maintenance are far more expensive to repair. As such, the Road Commission must work to apply preventative maintenance as much as possible to prevent the need for more expensive repairs in the future.

EXPENDITURES CONTINUED



In order to maintain the Road Commission’s fleet and facilities, the Road Commission must expend dollars for capital outlay. In 2023 the gross capital outlay was \$1.6 million, with 98.1% of expenditure being on road equipment. The chart above shows the allocation of these expenditures by type, and the chart below shows the details within each category.

Road Equipment

Western Star Chassis (4)	\$	598,840.00
Truck Build ups (6)	\$	829,126.00
Engine Rebuild	\$	24,900.00
Utility Trailer	\$	999.99
Radios	\$	151,617.00

Buildings

Bloomington HVAC	\$	8,100.00
Bloomington Security	\$	3,004.63

Shop

Washing Machine	\$	499.99
-----------------	----	--------

Office

Office Furniture	\$	2,715.66
IT Upgrades and Purchases	\$	10,234.64
Office Appliances	\$	2,438.20

Engineering Equipment

Traffic Counters	\$	4,935.00
------------------	----	----------

PUBLIC WORKS ANNUAL REPORT

Van Buren County Board of Public Works 2023 Annual Report

W. C. Askew, Sr.	Chairperson
Gregory H. Kinney	Vice-Chairman
Reginald D. Boze	Secretary
Douglas Burleson	Member
Wayne Nelson	Member

Van Buren County Department of Public Works
Sanitary Sewage Disposal Debt Service Funds
Combining Statement of Revenues, Expenditures & Changes in Fund Balances

	Covert Refunding 2013	Total
REVENUE		
Local Contributions	\$ 712,906.25	\$ 712,906.25
Bond Revenue	\$ -	
Accrued Interest	\$ -	
Capital Interest	\$ -	
TOTAL REVENUE	\$ 712,906.25	\$ 712,906.25
EXPENDITURES		
Bond Principal	\$ 690,000.00	\$ 690,000.00
Interest	\$ 22,406.25	\$ 22,406.25
Bank Fees	\$ 500.00	\$ 500.00
TOTAL EXPEND.	\$ 712,906.25	\$ 712,906.25
Excess Revenues		
Over/Under Expend.	\$ -	\$ -
Beginning Balance	\$ -	\$ -
Transfer	\$ -	\$ -
End of Balance	\$ -	\$ -

PUBLIC WORKS ANNUAL REPORT CONTINUED

**Van Buren County Board of Public Works
Listing of Outstanding Debt (Principal Only)**

	Amount of Issue Original / Refinanced	Principal Amount Remaining As of 12/31/22	Principal Amount Remaining As of 12/31/23	Bond Term
Covert Refunding 2013	\$ 7,670,000.00	\$ 1,360,000.00	\$ 670,000.00	2024
	<u>\$ 7,670,000.00</u>	<u>\$ 1,360,000.00</u>	<u>\$ 670,000.00</u>	

TOWNSHIP SUMMARIES

Van Buren County is divided into 18 Townships. The Road Commission and officials from each Township work together to determine the needs of the road system throughout the County.

The next page (page 30) shows the break down of County-wide expenses dedicated to Heavy Maintenance and Routine and Special Maintenance on the County-wide Road and bridge network.

Pages 31-48 break down expenditures on Heavy Maintenance and Routine and Special Maintenance by each Township. These expenditures vary based upon road needs and available funding within each Township. As a whole, the Townships contributed over \$6 million towards road projects in 2023. Those projects were selected by each respective Township.

TOWNSHIP SUMMARIES CONTINUED

County-Wide

Heavy Maintenance Summary		
Primary Road Heavy Maintenance	17.26 Miles	\$5,422,440.85
Local Road Heavy Maintenance	13.50 Miles	\$4,208,352.40
Primary Bridge Heavy Maintenance	1 Bridge	\$9,765.81
Local Bridge Heavy Maintenance		
Total Heavy Maintenance	30.76 Miles and 1 Bridge	\$9,640,559.06

General Maintenance Summary		
Primary Road		
General Maintenance		\$1,312,222.27
Snow and Ice Control		\$549,583.71
Special Maintenance	\$1,967,091.22	
County-Wide Pavement Marking	\$134,000.52	
County-Wide Brush Spray	\$63,993.07	
Total Special Maintenance		\$2,165,084.81
Bridge Maintenance		\$4,703.49
Local Road		
General Maintenance		\$2,293,479.57
Snow and Ice Control		\$743,346.51
Special Maintenance	\$3,957,138.03	
County-Wide Pavement Marking	\$74,359.06	
County-Wide Brush Spray	\$0.00	
Total Special Maintenance		\$4,031,497.14
Bridge Maintenance		\$501.28
Total Routine and Special Maintenance		\$11,100,418.78

2023 Township Summary	
Primary Heavy Roads and Bridges	\$5,432,206.66
Local Heavy Roads and Bridges	\$4,208,352.40
Primary Maintenance	\$4,031,594.28
Local Maintenance	\$7,068,824.50
Total 2023 Road and Bridge Investment	\$20,740,977.84

TOWNSHIP SUMMARIES CONTINUED

Almena Township

Heavy Maintenance Road Projects			
Road Name	Road Segment	Project Scope	2023 Cost
Primary Road Heavy Maintenance			
Local Road Heavy Maintenance			
30 th Street	48 th Avenue to CR 653	Crush, Trench, Widen, Shape, and Pave	\$1,653,776.71
Primary Bridge Heavy Maintenance			
Local Bridge Heavy Maintenance			
Total Heavy Maintenance			\$1,653,776.71

General Maintenance	
Primary Road	
General Maintenance	\$64,866.11
Snow and Ice Control	\$30,167.35
Special Maintenance	\$195,930.18
Bridge Maintenance	\$0.00
Local Road	
General Maintenance	\$189,858.78
Snow and Ice Control	\$54,973.61
Special Maintenance	\$189,875.47
Bridge Maintenance	\$0.00

2023 Township Summary	
Primary Heavy Roads and Bridges	\$0.00
Local Heavy Roads and Bridges	\$1,653,776.71
Primary Maintenance	\$290,963.64
Local Maintenance	\$434,707.86
Total 2023 Road and Bridge Investment	\$2,379,448.21

TOWNSHIP SUMMARIES CONTINUED

Antwerp Township

Heavy Maintenance Road Projects			
Road Name	Road Segment	Project Scope	2023 Cost
Primary Road Heavy Maintenance			
Local Road Heavy Maintenance			
26 th Street	Red Arrow Highway to Village of Mattawan	Crush, Shape, Pave	\$100,111.26
Autumn Vineyards	Full Subdivision	Mill and Overlay	\$584,497.14
26 th Street	CR 358 to 66 th Avenue	Mill and Overlay	\$145,956.17
26 th Street	66 th Avenue to 63 rd Avenue	Wedge and Sealcoat	\$129,066.17
Primary Bridge Heavy Maintenance			
Local Bridge Heavy Maintenance			
Total Heavy Maintenance			\$959,630.74

General Maintenance	
Primary Road	
General Maintenance	\$110,629.06
Snow and Ice Control	\$39,606.74
Special Maintenance	\$271,269.53
Bridge Maintenance	\$0.00
Local Road	
General Maintenance	\$114,594.44
Snow and Ice Control	\$80,632.94
Special Maintenance	\$194,001.87
Bridge Maintenance	\$0.00

2023 Township Summary	
Primary Heavy Roads and Bridges	\$0.00
Local Heavy Roads and Bridges	\$959,630.74
Primary Maintenance	\$421,505.32
Local Maintenance	\$389,229.25
Total 2023 Road and Bridge Investment	\$1,770,365.31

TOWNSHIP SUMMARIES CONTINUED

Arlington Township

Heavy Maintenance Road Projects			
Road Name	Road Segment	Project Scope	2023 Cost
Primary Road Heavy Maintenance			
CR 215	44 th Avenue to 48 th Avenue	2024 Safety Project	\$15,479.94
Local Road Heavy Maintenance			
Park Lane (East Side)	North of 28 th Avenue	Ditching, Driveway Pipe Replacements	\$59,288.96
Primary Bridge Heavy Maintenance			
Local Bridge Heavy Maintenance			
Total Heavy Maintenance			\$74,768.90

General Maintenance	
Primary Road	
General Maintenance	\$95,482.33
Snow and Ice Control	\$24,222.49
Special Maintenance	\$0.00
Bridge Maintenance	\$0.00
Local Road	
General Maintenance	\$145,491.02
Snow and Ice Control	\$38,759.75
Special Maintenance	\$112,046.87
Bridge Maintenance	\$0.00

2023 Township Summary	
Primary Heavy Roads and Bridges	\$74,768.90
Local Heavy Roads and Bridges	\$0.00
Primary Maintenance	\$119,704.82
Local Maintenance	\$296,297.64
Total 2023 Road and Bridge Investment	\$490,771.36

TOWNSHIP SUMMARIES CONTINUED

Bangor Township

Heavy Maintenance Road Projects			
Road Name	Road Segment	Project Scope	2023 Cost
Primary Road Heavy Maintenance			
Local Road Heavy Maintenance			
Primary Bridge Heavy Maintenance			
Local Bridge Heavy Maintenance			
Total Heavy Maintenance			\$0.00

General Maintenance	
Primary Road	
General Maintenance	\$82,973.42
Snow and Ice Control	\$30,396.53
Special Maintenance	\$166,820.31
Bridge Maintenance	\$0.00
Local Road	
General Maintenance	\$156,060.86
Snow and Ice Control	\$37,747.53
Special Maintenance	\$295,707.42
Bridge Maintenance	\$0.00

2023 Township Summary	
Primary Heavy Roads and Bridges	\$0.00
Local Heavy Roads and Bridges	\$0.00
Primary Maintenance	\$280,190.26
Local Maintenance	\$489,515.81
Total 2023 Road and Bridge Investment	\$769,706.07

TOWNSHIP SUMMARIES CONTINUED

Bloomingtondale Township

Heavy Maintenance Road Projects			
Road Name	Road Segment	Project Scope	2023 Cost
Primary Road Heavy Maintenance			
CR 380	Columbia Township Line to CR 665	Top Course Pave	\$391,358.31
Local Road Heavy Maintenance			
Primary Bridge Heavy Maintenance			
Local Bridge Heavy Maintenance			
Total Heavy Maintenance			\$391,358.31

General Maintenance	
Primary Road	
General Maintenance	\$71,745.17
Snow and Ice Control	\$29,677.53
Special Maintenance	\$65,972.09
Bridge Maintenance	\$0.00
Local Road	
General Maintenance	\$95,094.80
Snow and Ice Control	\$36,344.40
Special Maintenance	\$334,057.94
Bridge Maintenance	\$0.00

2023 Township Summary	
Primary Heavy Roads and Bridges	\$391,358.31
Local Heavy Roads and Bridges	\$0.00
Primary Maintenance	\$167,394.79
Local Maintenance	\$465,497.14
Total 2023 Road and Bridge Investment	\$1,024,250.24

TOWNSHIP SUMMARIES CONTINUED

Columbia Township

Heavy Maintenance Road Projects			
Road Name	Road Segment	Project Scope	2023 Cost
Primary Road Heavy Maintenance			
Local Road Heavy Maintenance			
Primary Bridge Heavy Maintenance			
Local Bridge Heavy Maintenance			
Total Heavy Maintenance			\$0.00

General Maintenance	
Primary Road	
General Maintenance	\$75,520.32
Snow and Ice Control	\$50,648.51
Special Maintenance	\$123,353.05
Bridge Maintenance	\$0.00
Local Road	
General Maintenance	\$149,168.31
Snow and Ice Control	\$45,162.51
Special Maintenance	\$372,522.24
Bridge Maintenance	\$0.00

2023 Township Summary	
Primary Heavy Roads and Bridges	\$0.00
Local Heavy Roads and Bridges	\$0.00
Primary Maintenance	\$249,521.88
Local Maintenance	\$566,853.06
Total 2023 Road and Bridge Investment	\$816,374.94

TOWNSHIP SUMMARIES CONTINUED

Covert Township

Heavy Maintenance Road Projects			
Road Name	Road Segment	Project Scope	2023 Cost
Primary Road Heavy Maintenance			
Local Road Heavy Maintenance			
30 th Avenue	Between 77.5 Street and 76 th Street	Culvert Replacement	\$90,600.32
30 th Avenue	East of 75 th Street	Clear Right-of-Way, Drainage Improvements	\$52,861.78
30 th Avenue	West of 75 th Street	Clear Right-of-Way, Drainage Improvements	\$30,556.28
Primary Bridge Heavy Maintenance			
Local Bridge Heavy Maintenance			
Total Heavy Maintenance			\$174,018.38

General Maintenance	
Primary Road	
General Maintenance	\$37,667.22
Snow and Ice Control	\$18,805.07
Special Maintenance	\$0.00
Bridge Maintenance	\$0.00
Local Road	
General Maintenance	\$69,916.90
Snow and Ice Control	\$35,182.59
Special Maintenance	\$240,647.88
Bridge Maintenance	\$0.00

2023 Township Summary	
Primary Heavy Roads and Bridges	\$0.00
Local Heavy Roads and Bridges	\$174,018.38
Primary Maintenance	\$56,472.29
Local Maintenance	\$345,747.37
Total 2023 Road and Bridge Investment	\$576,238.04

TOWNSHIP SUMMARIES CONTINUED

Decatur Township

Heavy Maintenance Road Projects			
Road Name	Road Segment	Project Scope	2023 Cost
Primary Road Heavy Maintenance			
Local Road Heavy Maintenance			
Burgess Road	82 nd Avenue to 38 th Street	Top Course Pave	\$279,238.31
Primary Bridge Heavy Maintenance			
Local Bridge Heavy Maintenance			
Total Heavy Maintenance			\$279,238.31

General Maintenance	
Primary Road	
General Maintenance	\$79,868.51
Snow and Ice Control	\$21,060.36
Special Maintenance	\$25,187.53
Bridge Maintenance	\$0.00
Local Road	
General Maintenance	\$124,294.24
Snow and Ice Control	\$36,891.23
Special Maintenance	\$29,385.35
Bridge Maintenance	\$0.00

2023 Township Summary	
Primary Heavy Roads and Bridges	\$0.00
Local Heavy Roads and Bridges	\$279,238.31
Primary Maintenance	\$126,116.40
Local Maintenance	\$190,570.82
Total 2023 Road and Bridge Investment	\$595,925.53

TOWNSHIP SUMMARIES CONTINUED

Geneva Township

Heavy Maintenance Road Projects			
Road Name	Road Segment	Project Scope	2023 Cost
Primary Road Heavy Maintenance			
Local Road Heavy Maintenance			
16 th Avenue	60 th Street to 62 nd Street	Final Grade, Top Course Pave	\$324,559.83
70 th Street	2 nd Avenue to Black River Bridge	Clearing and Drainage Corrections	\$115,072.31
66 th Street	M-43 to CR 380	Crosspipe Removal and Drainage Structure Install	\$83,984.51
Primary Bridge Heavy Maintenance			
CR 384	Between 68 th Street and CR 689	Preventative Maintenance	\$9,765.81
Local Bridge Heavy Maintenance			
Total Heavy Maintenance			\$533,382.46

General Maintenance	
Primary Road	
General Maintenance	\$80,693.75
Snow and Ice Control	\$34,735.21
Special Maintenance	\$57,730.03
Bridge Maintenance	\$3,199.65
Local Road	
General Maintenance	\$111,693.59
Snow and Ice Control	\$38,856.09
Special Maintenance	\$140,328.93
Bridge Maintenance	\$0.00

2023 Township Summary	
Primary Heavy Roads and Bridges	\$9,765.81
Local Heavy Roads and Bridges	\$523,616.65
Primary Maintenance	\$176,358.64
Local Maintenance	\$290,878.61
Total 2023 Road and Bridge Investment	\$1,000,619.71

TOWNSHIP SUMMARIES CONTINUED

Hamilton Township

Heavy Maintenance Road Projects			
Road Name	Road Segment	Project Scope	2023 Cost
Primary Road Heavy Maintenance			
CR 360	Between CR 215 and 55 th Street	Culvert Replacment	\$83.23
Local Road Heavy Maintenance			
Primary Bridge Heavy Maintenance			
Local Bridge Heavy Maintenance			
Total Heavy Maintenance			\$83.23

General Maintenance	
Primary Road	
General Maintenance	\$110,598.85
Snow and Ice Control	\$26,462.64
Special Maintenance	\$269,539.37
Bridge Maintenance	\$0.00
Local Road	
General Maintenance	\$89,123.78
Snow and Ice Control	\$26,352.51
Special Maintenance	\$229,966.36
Bridge Maintenance	\$0.00

2023 Township Summary	
Primary Heavy Roads and Bridges	\$83.23
Local Heavy Roads and Bridges	\$0.00
Primary Maintenance	\$406,599.67
Local Maintenance	\$345,442.65
Total 2023 Road and Bridge Investment	\$752,125.55

TOWNSHIP SUMMARIES CONTINUED

Hartford Township

Heavy Maintenance Road Projects			
Road Name	Road Segment	Project Scope	2023 Cost
Primary Road Heavy Maintenance			
Red Arrow Hwy	70 th Street to City of Hartford	Mill and Overlay	\$32.25
Local Road Heavy Maintenance			
Primary Bridge Heavy Maintenance			
Local Bridge Heavy Maintenance			
Total Heavy Maintenance			\$32.25

General Maintenance	
Primary Road	
General Maintenance	\$73,570.83
Snow and Ice Control	\$21,462.64
Special Maintenance	\$126,051.12
Bridge Maintenance	\$0.00
Local Road	
General Maintenance	\$61,066.71
Snow and Ice Control	\$35,152.83
Special Maintenance	\$232,281.75
Bridge Maintenance	\$0.00

2023 Township Summary	
Primary Heavy Roads and Bridges	\$32.25
Local Heavy Roads and Bridges	\$0.00
Primary Maintenance	\$221,084.59
Local Maintenance	\$328,501.29
Total 2023 Road and Bridge Investment	\$549,618.13

TOWNSHIP SUMMARIES CONTINUED

Keeler Township

Heavy Maintenance Road Projects			
Road Name	Road Segment	Project Scope	2023 Cost
Primary Road Heavy Maintenance			
CR 687	CR 342 to 90 th Avenue	Trench, Widen, Crush, Shape, and Pave	\$457,525.29
CR 352	CR 687 to 60 th Street	Crush, Shape, Trench, Widen, Drainage Improvements, Tree Removals	\$1,433,207.28
Local Road Heavy Maintenance			
Primary Bridge Heavy Maintenance			
Local Bridge Heavy Maintenance			
Total Heavy Maintenance			\$1,890,732.57

General Maintenance	
Primary Road	
General Maintenance	\$81,821.70
Snow and Ice Control	\$26,907.49
Special Maintenance	\$136,999.16
Bridge Maintenance	\$0.00
Local Road	
General Maintenance	\$170,647.55
Snow and Ice Control	\$44,405.07
Special Maintenance	\$225,341.18
Bridge Maintenance	\$0.00

2023 Township Summary	
Primary Heavy Roads and Bridges	\$1,890,732.57
Local Heavy Roads and Bridges	\$0.00
Primary Maintenance	\$245,728.35
Local Maintenance	\$440,393.80
Total 2023 Road and Bridge Investment	\$2,576,854.72

TOWNSHIP SUMMARIES CONTINUED

Lawrence Township

Heavy Maintenance Road Projects			
Road Name	Road Segment	Project Scope	2023 Cost
Primary Road Heavy Maintenance			
Red Arrow Highway	Village of Lawrence to CR 671 S	Mill and Overlay	\$945,049.03
Local Road Heavy Maintenance			
Howard Drive	Territorial Road to End	Topographical Survey and Geotechnical Engineering	\$22,239.24
Primary Bridge Heavy Maintenance			
Local Bridge Heavy Maintenance			
Total Heavy Maintenance			\$967,288.27

General Maintenance	
Primary Road	
General Maintenance	\$77,305.42
Snow and Ice Control	\$49,302.57
Special Maintenance	\$248,995.16
Bridge Maintenance	\$0.00
Local Road	
General Maintenance	\$153,078.86
Snow and Ice Control	\$34,890.17
Special Maintenance	\$298,682.32
Bridge Maintenance	\$0.00

2023 Township Summary	
Primary Heavy Roads and Bridges	\$945,049.03
Local Heavy Roads and Bridges	\$22,293.24
Primary Maintenance	\$375,603.15
Local Maintenance	\$486,651.35
Total 2023 Road and Bridge Investment	\$1,829,542.77

TOWNSHIP SUMMARIES CONTINUED

Paw Paw Township

Heavy Maintenance Road Projects			
Road Name	Road Segment	Project Scope	2023 Cost
Primary Road Heavy Maintenance			
Local Road Heavy Maintenance			
Primary Bridge Heavy Maintenance			
Local Bridge Heavy Maintenance			
Total Heavy Maintenance			\$0.00

General Maintenance	
Primary Road	
General Maintenance	\$64,640.97
Snow and Ice Control	\$38,570.81
Special Maintenance	\$208,406.95
Bridge Maintenance	\$0.00
Local Road	
General Maintenance	\$166,865.26
Snow and Ice Control	\$53,138.28
Special Maintenance	\$343,064.60
Bridge Maintenance	\$0.00

2023 Township Summary	
Primary Heavy Roads and Bridges	\$0.00
Local Heavy Roads and Bridges	\$0.00
Primary Maintenance	\$311,618.73
Local Maintenance	\$563,068.14
Total 2023 Road and Bridge Investment	\$874,686.87

TOWNSHIP SUMMARIES CONTINUED

Pine Grove Township

Heavy Maintenance Road Projects			
Road Name	Road Segment	Project Scope	2023 Cost
Primary Road Heavy Maintenance			
CR 388	29 th Street to CR 653	Reconstruction	\$1,207,419.99
CR 388	CR 653 to Kalamazoo County Line	Reconstruction	\$1,309.02
Local Road Heavy Maintenance			
32 nd Street	20 th Avenue to CR 388	CANCELLED	\$464.11
23.5 Street	04000 Block	Tree Removals, Ditching	\$14,356.82
2 nd Avenue	24000 Block	Tree Removals, Ditching	\$25,619.95
Primary Bridge Heavy Maintenance			
Local Bridge Heavy Maintenance			
<i>Less Administrative Fee for Cancelled Projects</i>			<i>(\$464.11)</i>
Total Heavy Maintenance			\$1,248,705.78

General Maintenance	
Primary Road	
General Maintenance	\$75,915.13
Snow and Ice Control	\$23,441.41
Special Maintenance	\$57,277.64
Bridge Maintenance	\$0.00
Local Road	
General Maintenance	\$154,508.77
Snow and Ice Control	\$42,447.01
Special Maintenance	\$85,318.77
Bridge Maintenance	\$0.00

2023 Township Summary	
Primary Heavy Roads and Bridges	\$1,208,827.02
Local Heavy Roads and Bridges	\$39,976.77
Primary Maintenance	\$156,634.18
Local Maintenance	\$282,274.55
Total 2023 Road and Bridge Investment	\$1,687,614.51

TOWNSHIP SUMMARIES CONTINUED

Porter Township

Heavy Maintenance Road Projects			
Road Name	Road Segment	Project Scope	2023 Cost
Primary Road Heavy Maintenance			
Local Road Heavy Maintenance			
80 th Avenue	M-40 to 29 th Street	Trench, Widen, Pave	\$453,361.84
Primary Bridge Heavy Maintenance			
Local Bridge Heavy Maintenance			
Total Heavy Maintenance			\$453,361.84

General Maintenance	
Primary Road	
General Maintenance	\$35,807.57
Snow and Ice Control	\$25,776.16
Special Maintenance	\$0.00
Bridge Maintenance	\$0.00
Local Road	
General Maintenance	\$91,244.49
Snow and Ice Control	\$38,187.84
Special Maintenance	\$126,054.48
Bridge Maintenance	\$0.00

2023 Township Summary	
Primary Heavy Roads and Bridges	\$0.00
Local Heavy Roads and Bridges	\$453,361.84
Primary Maintenance	\$61,583.73
Local Maintenance	\$255,486.81
Total 2023 Road and Bridge Investment	\$770,432.38

TOWNSHIP SUMMARIES CONTINUED

South Haven Township

Heavy Maintenance Road Projects			
Road Name	Road Segment	Project Scope	2023 Cost
Primary Road Heavy Maintenance			
CR 689	8 th Avenue to CR 388	Reconstruction	\$970,976.51
Local Road Heavy Maintenance			
76 th Street	South of 11 th Avenue	Ditching, Drainage Improvements, Tree Removals	\$42,740.69
Primary Bridge Heavy Maintenance			
Local Bridge Heavy Maintenance			
Total Heavy Maintenance			\$1,013,717.20

General Maintenance	
Primary Road	
General Maintenance	\$57,778.13
Snow and Ice Control	\$33,746.12
Special Maintenance	\$13,559.10
Bridge Maintenance	\$0.00
Local Road	
General Maintenance	\$118,311.45
Snow and Ice Control	\$31,092.73
Special Maintenance	\$284,156.55
Bridge Maintenance	\$0.00

2023 Township Summary	
Primary Heavy Roads and Bridges	\$970,976.51
Local Heavy Roads and Bridges	\$42,740.69
Primary Maintenance	\$105,083.35
Local Maintenance	\$433,560.73
Total 2023 Road and Bridge Investment	\$1,552,361.28

TOWNSHIP SUMMARIES CONTINUED

Waverly Township

Heavy Maintenance Road Projects			
Road Name	Road Segment	Project Scope	2023 Cost
Primary Road Heavy Maintenance			
Local Road Heavy Maintenance			
Primary Bridge Heavy Maintenance			
Local Bridge Heavy Maintenance			
Total Heavy Maintenance			\$0.00

General Maintenance	
Primary Road	
General Maintenance	\$35,337.79
Snow and Ice Control	\$24,595.27
Special Maintenance	\$0.00
Bridge Maintenance	\$0.00
Local Road	
General Maintenance	\$132,459.76
Snow and Ice Control	\$33,129.42
Special Maintenance	\$223,698.10
Bridge Maintenance	\$0.00

2023 Township Summary	
Primary Heavy Roads and Bridges	\$0.00
Local Heavy Roads and Bridges	\$0.00
Primary Maintenance	\$59,933.06
Local Maintenance	\$389,287.28
Total 2023 Road and Bridge Investment	\$449,220.34

ACT 51 AND AUDIT REPORTS

Public Act 51 of 1951, requires the annual reporting of all financial information to the State of Michigan. The reporting form (Act 51 Report), is designed, and monitored by the State of Michigan. The Van Buren County Road Commission contracts with the Department of Treasury for the annual audit. Information contained within the Road Commission's Act 51 has been verified by the State of Michigan, Department of Treasury's Auditor, Derek Hall.

The 2023 reports can be located on the Road Commission's website under the Board and Compliance tab, or by following the links provided below.

Act 51 Report www.vbcrc.org/compliance

Audit Report www.vbcrc.org/audits

Any questions regarding the Annual Report, Act 51 Report, or the Audit Report can be directed to the Road Commission's Finance and Human Resources Director, Linnea Rader at linnearader@vbcrc.org.